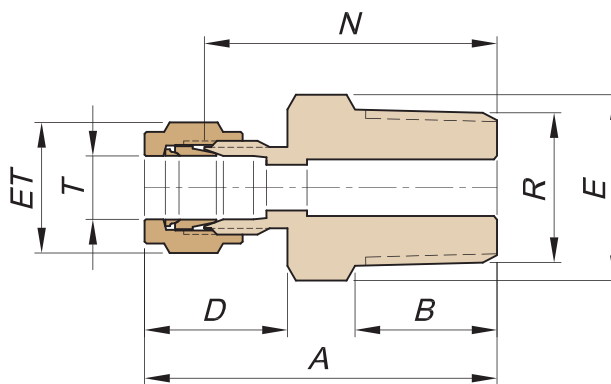
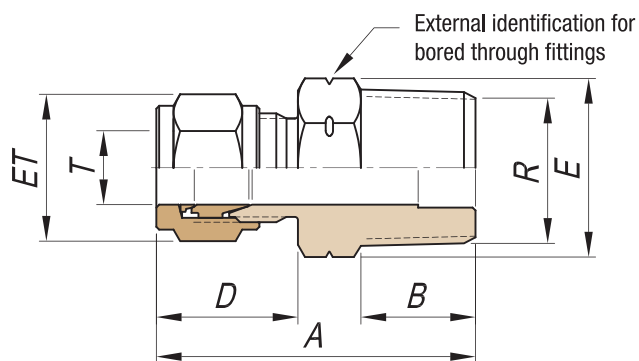


RM male connector



Installation required measures

Model	T Tube OD	R NPT	MEASURES (mm)					
			A	B	D	E	ET	N
RM 1-1-	1/8	1/8	35.0	10.0	17.0	11.1	11.1	27.0
RM 1-2-	1/8	1/4	40.0	15.0	17.0	14.3	11.1	32.0
RM 1-4-	1/8	1/2	44.0	18.0	17.0	22.2	11.1	36.0
RM 2-1-	1/4	1/8	37.2	10.0	19.2	14.3	14.3	29.0
RM 2-2-	1/4	1/4	42.2	15.0	19.2	14.3	14.3	34.0
RM 2-3-	1/4	3/8	42.2	15.0	19.2	17.3	14.3	34.0
RM 2-4-	1/4	1/2	46.2	18.0	19.2	22.2	14.3	38.0
RM 2-6-	1/4	3/4	49.2	20.0	19.2	27.0	14.3	41.0
RM 3-1-	3/8	1/8	39.1	10.0	21.1	15.9	17.3	30.0
RM 3-2-	3/8	1/4	44.1	15.0	21.1	15.9	17.3	35.0
RM 3-3-	3/8	3/8	44.1	15.0	21.1	17.3	17.3	35.0
RM 3-4-	3/8	1/2	48.1	18.0	21.1	22.2	17.3	39.0
RM 3-6-	3/8	3/4	51.1	20.0	21.1	27.0	17.3	42.0
RM 4-1-	1/2	1/8	43.0	10.0	24.0	22.2	22.2	31.0
RM 4-2-	1/2	1/4	48.0	15.0	24.0	22.2	22.2	36.0
RM 4-3-	1/2	3/8	48.0	15.0	24.0	22.2	22.2	36.0
RM 4-4-	1/2	1/2	51.0	18.0	24.0	22.2	22.2	39.0
RM 4-6-	1/2	3/4	55.0	20.0	24.0	27.0	22.2	43.0
RM 4-8-	1/2	1	63.0	25.0	24.0	34.9	22.2	51.0
RM 5-3-	5/8	3/8	48.7	15.0	23.7	23.8	25.4	38.2
RM 5-4-	5/8	1/2	49.7	18.0	23.7	23.8	25.4	39.0
RM 5-6-	5/8	3/4	53.7	20.0	23.7	27.0	25.4	43.2
RM 5-8-	5/8	1	62.7	25.0	23.7	34.9	28.6	52.2
RM 6-2-	3/4	1/4	49.6	25.0	24.6	34.9	28.6	38.2
RM 6-4-	3/4	1/2	52.6	18.0	28.1	34.9	38.1	41.2
RM 6-6-	3/4	3/4	54.6	20.0	28.1	34.9	38.1	43.2
RM 6-8-	3/4	1	63.6	25.0	28.1	34.9	38.1	52.2
RM 8-4-	1	1/2	60.1	18.0	28.1	34.9	38.1	46.5
RM 8-6-	1	3/4	62.1	20.0	28.1	34.9	38.1	48.5
RM 8-8-	1	1	67.1	25.0	28.1	34.9	38.1	53.5

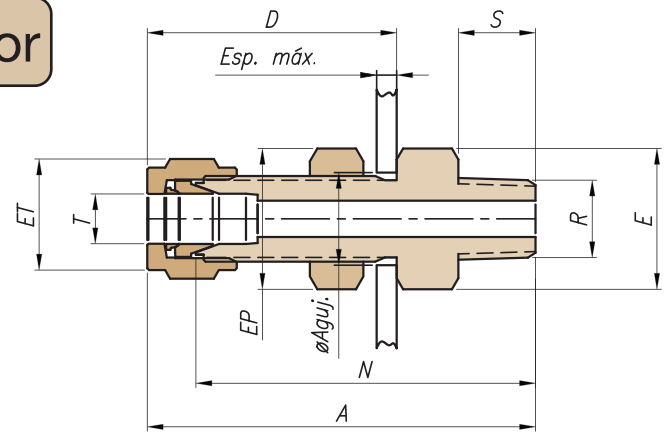
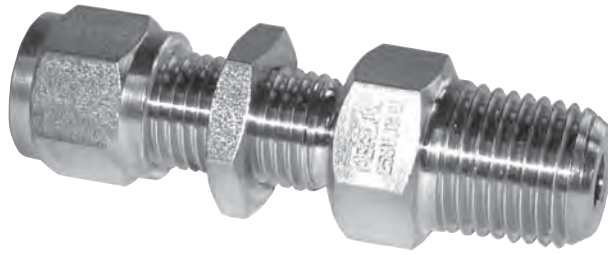


Bored-Through Fittings

For Thermocouples, and dip tubes

Add **AP** to the model. Ex. RM-2-2-316-AP

RMP male bulkhead connector



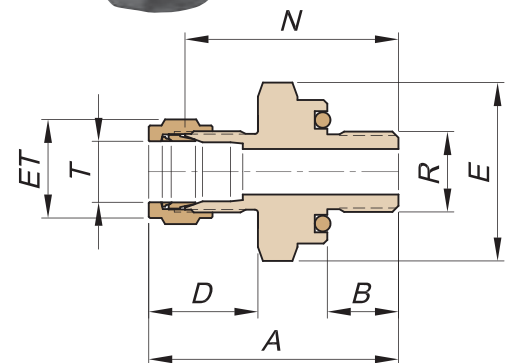
Installment required measures

Model	T Tube OD	R NPT	MEASURES (MM)							Panel	
			A	D	E	EP	ET	N	S	hole	maximum thickness
RMP 1-1-	1/8	1/8	48.0	31.0	12.7	12.7	11.1	40.0	10.0	8	14.0
RMP 2-1-	1/4	1/8	52.2	34.2	15.8	15.8	14.3	44.0	10.0	11.3	15.0
RMP 2-2-	1/4	1/4	57.2	34.2	15.8	15.8	14.3	49.0	15.0	11.3	15.0
RMP 3-2-	3/8	1/4	61.1	38.1	19.1	19.1	17.3	52.0	15.0	14.5	17.0
RMP 3-3-	3/8	3/8	61.1	38.1	19.1	19.1	17.3	52.0	15.0	14.5	17.0
RMP 3-4-	3/8	1/2	66.1	38.1	22.2	19.1	17.3	57.0	18.0	14.5	17.0
RMP 4-2-	1/2	1/4	67.0	44.0	25.4	25.4	22.2	55.0	15.0	19.3	20.0
RMP 4-3-	1/2	3/8	67.0	44.0	25.4	25.4	22.2	55.0	15.0	19.3	20.0
RMP 4-4-	1/2	1/2	72.0	44.0	25.4	25.4	22.2	60.0	18.0	19.3	20.0

RMA o'ring straight connector

ABALOK® o'ring connectors provide a vacuum-tight or pressure seal with existing straight thread ports.

The fittings are designed in a way that, when installed, the O-Ring is completely retained by metal, to prevent its extrusion. In order to make a leak tight seal with ABALOK® o'ring fittings, it is necessary to have a smooth, flat surface perpendicular to the axis of the threads. When connecting the tubing to the ABALOK® connector, always use a back-up wrench on the o'ring fitting hex to keep it from turning while the nut is being tightened. Also use a back-up wrench while disconnecting a tubing connection.



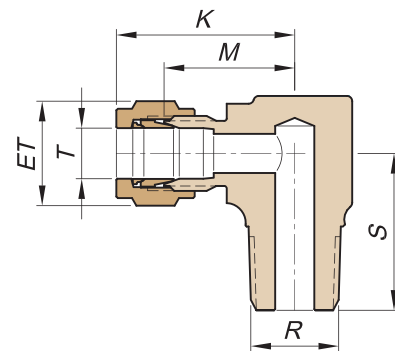
Installment required measures

Model	T Tube OD	R UNF	MEASURES (MM)					
			A	B	D	E	ET	N
RMA 20-R-	1/4	7/16-20	41.2	10.3	19.2	19.1	14.3	33.0
RMA 23-R-	1/4	9/16-18	42.3	11.7	19.2	23.8	14.3	34.1
RMA 3-R-	3/8	9/16-18	44.2	11.7	21.1	23.8	17.3	35.1
RMA 4-R-	1/2	9/16-18	48.3	12.0	24.0	23.8	22.2	36.3
RMA 5-R-	5/8	7/8-14	49.6	12.0	23.7	33.3	25.4	38.9
RMA 6-R-	3/4	1 1/16-12	53.2	14.3	24.6	38.1	28.6	41.8
RMA 8-R-	1	1 5/16-12	61.0	14.3	28.1	44.5	38.1	47.4

CM male elbow

Installment required measures

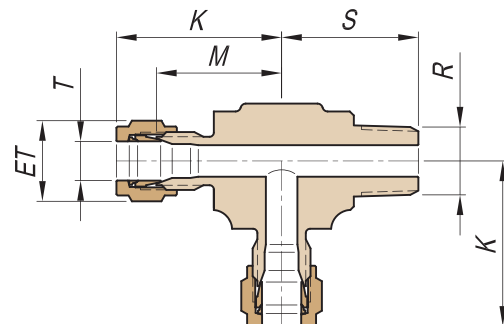
Model	T Tube OD	R NPT	MEASURES (MM)			
			ET	K	M	S
CM 1-1-	1/8	1/8	11.1	26.0	18.0	19.0
CM 1-2-	1/8	1/4	11.1	26.0	18.0	25.5
CM 1-4-	1/8	1/2	11.1	26.2	22.0	33.0
CM 2-1-	1/4	1/8	14.3	28.2	20.0	19.0
CM 2-2-	1/4	1/4	14.3	28.2	20.0	25.5
CM 2-3-	1/4	3/8	14.3	32.2	24.0	30.0
CM 2-4-	1/4	1/2	14.3	32.2	24.0	33.0
CM 3-1-	3/8	1/8	17.3	30.6	21.5	20.0
CM 3-2-	3/8	1/4	17.3	30.6	21.5	25.5
CM 3-3-	3/8	3/8	17.3	34.1	25.0	30.0
CM 3-4-	3/8	1/2	17.3	34.1	25.0	33.0
CM 4-2-	1/2	1/4	22.2	38.0	26.0	29.0
CM 4-3-	1/2	3/8	22.2	38.0	26.0	30.0
CM 4-4-	1/2	1/2	22.2	38.0	26.0	33.0
CM 4-6-	1/2	3/4	22.2	42.5	31.0	40.0
CM 5-4-	5/8	1/2	25.4	42.7	32.0	41.0
CM 5-6-	5/8	3/4	25.4	42.7	32.0	41.0
CM 6-4-	3/4	1/2	28.6	43.4	32.0	41.0
CM 6-6-	3/4	3/4	28.6	43.4	32.0	41.0
CM 8-6-	1	3/4	38.1	47.6	34.0	42.0
CM 8-8-	1	1	38.1	47.6	34.0	47.0



TMT male run tee

Installment required measures

Modelo	T Tubo OD	R NPT	MEASURES (MM)			
			ET	K	M	S
TMT 1-1-	1/8	1/8	11.1	26.0	18.0	19.0
TMT 1-2-	1/8	1/4	11.1	26.0	18.0	25.5
TMT 2-1-	1/4	1/8	14.3	28.2	20.0	19.0
TMT 2-2-	1/4	1/4	14.3	28.2	20.0	25.5
TMT 3-2-	3/8	1/4	17.3	30.6	21.5	25.5
TMT 3-3-	3/8	3/8	17.3	34.5	25.5	29.5
TMT 3-4-	3/8	1/2	17.3	34.5	25.5	32.5
TMT 4-2-	1/2	1/4	22.2	38.0	26.0	26.0
TMT 4-3-	1/2	3/8	22.2	38.0	26.0	27.5
TMT 4-4-	1/2	1/2	22.2	38.0	26.0	33.0
TMT 5-4-	5/8	1/2	25.4	41.2	30.5	36.0
TMT 6-6-	3/4	3/4	28.6	43.4	32.0	41.0

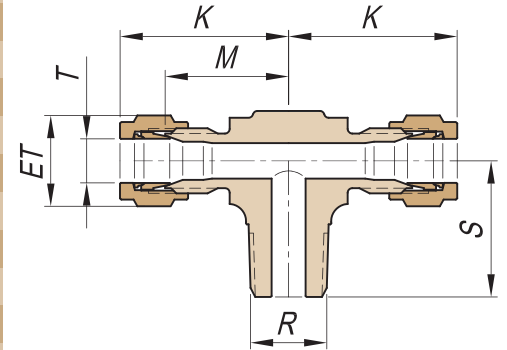


TTM male branch tee



Installment required measures

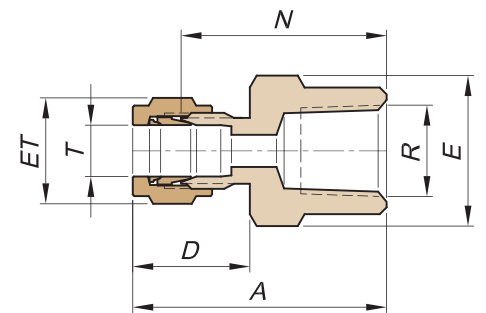
Model	T Tube OD	R NPT	MEASURES (MM)			
			ET	K	M	S
TTM 1-1-	1/8	1/8	11.1	26.0	18.0	19.0
TTM 1-2-	1/8	1/4	11.1	26.0	18.0	25.5
TTM 2-1-	1/4	1/8	14.3	28.2	20.0	19.0
TTM 2-2-	1/4	1/4	14.3	28.2	20.0	25.5
TTM 2-3-	1/4	3/8	14.3	33.7	25.5	29.5
TTM 2-4-	1/4	1/2	14.3	33.7	25.5	33.0
TTM 3-2-	3/8	1/4	17.3	30.6	21.5	25.5
TTM 3-3-	3/8	3/8	17.3	34.6	25.5	29.5
TTM 3-4-	3/8	1/2	17.3	34.6	25.5	33.0
TTM 4-2-	1/2	1/4	22.2	38.0	26.0	29.0
TTM 4-3-	1/2	3/8	22.2	38.0	26.0	29.0
TTM 4-4-	1/2	1/2	22.2	38.0	26.0	33.0
TTM 5-4-	5/8	1/2	25.4	41.2	30.5	36.0
TTM 6-6-	3/4	3/4	28.6	43.4	32.0	41.0



RH female connector

Installment required measures

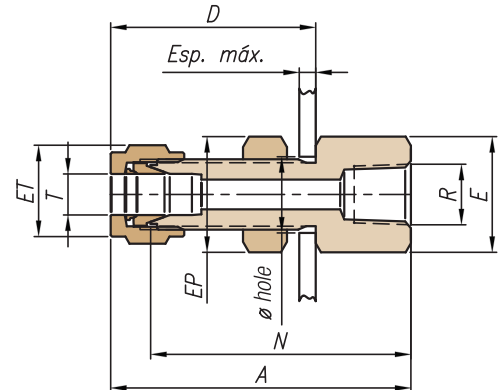
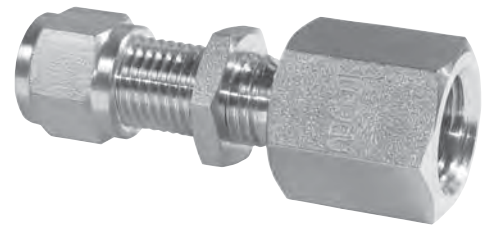
Model	T Tube OD	R NPT	MEASURES (MM)				
			A	D	E	ET	N
RH 1-1-	1/8	1/8	33.0	17.0	14.3	11.1	25.0
RH 1-2-	1/8	1/4	37.0	17.0	19.1	11.1	29.0
RH 1-4-	1/8	1/2	43.3	17.3	27.0	11.1	35.0
RH 2-1-	1/4	1/8	34.7	19.2	15.8	14.3	26.5
RH 2-2-	1/4	1/4	39.2	19.2	19.1	14.3	31.0
RH 2-3-	1/4	3/8	39.2	19.2	22.2	14.3	31.0
RH 2-4-	1/4	1/2	44.2	19.2	27.0	14.3	36.0
RH 3-1-	3/8	1/8	35.6	21.1	15.8	17.3	26.5
RH 3-2-	3/8	1/4	41.1	21.1	19.1	17.3	32.0
RH 3-3-	3/8	3/8	41.1	21.1	22.2	17.3	32.0
RH 3-4-	3/8	1/2	46.1	21.1	27.0	17.3	37.0
RH 4-2-	1/2	1/4	44.0	24.0	22.2	22.2	32.0
RH 4-3-	1/2	3/8	44.0	24.0	22.2	22.2	32.0
RH 4-4-	1/2	1/2	49.0	24.0	27.0	22.2	37.0
RH 4-6-	1/2	3/4	49.6	23.5	34.9	22.2	38.1
RH 5-4-	5/8	1/2	49.7	23.7	27.0	25.4	39.0
RH 6-4-	3/4	1/2	50.6	24.6	27.0	28.6	39.2
RH 6-6-	3/4	3/4	52.6	24.6	31.8	28.6	41.2
RH 8-8-	1	1	64.3	28.1	41.3	38.1	50.7



RHP female bulkhead connector

Installment required measures

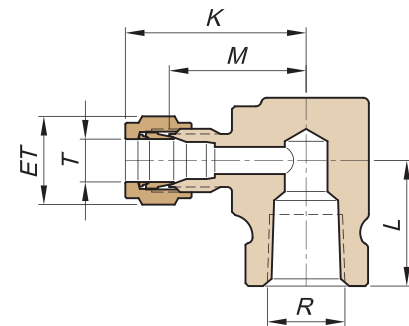
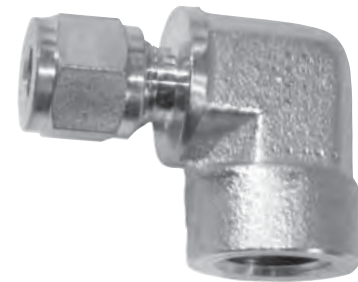
Model	T Tube OD	R NPT	MEASURES (MM)						Panel	
			A	D	E	EP	ET	N	hole	maximum thickness
RHP 1-1-	1/8	1/8	46.0	31.0	14.3	12.7	11.1	38.0	8.0	14.0
RHP 2-1-	1/4	1/8	49.2	34.2	15.8	15.8	14.3	41.0	11.3	15.0
RHP 2-2-	1/4	1/4	54.2	34.2	19.1	15.8	14.3	46.0	11.3	15.0
RHP 2-4-	1/4	1/2	59.2	34.2	27.0	15.8	14.3	51.0	11.3	15.0
RHP 3-2-	3/8	1/4	58.1	38.1	19.1	19.1	17.3	49.0	14.5	17.0
RHP 3-3-	3/8	3/8	58.1	38.1	22.2	19.1	17.3	49.0	14.5	17.0
RHP 3-4-	3/8	1/2	63.1	38.1	27.0	19.1	17.3	54.0	14.5	17.0
RHP 4-2-	1/2	1/4	64.0	44.0	24.0	25.4	22.2	52.0	19.3	20.0
RHP 4-3-	1/2	3/8	64.0	44.0	24.0	25.4	22.2	52.0	19.3	20.0
RHP 4-4-	1/2	1/2	70.0	44.0	27.0	25.4	22.2	58.0	19.3	20.0
RHP 6-6-	3/4	3/4	76.4	48.2	34.9	31.7	28.6	65.0	25.5	24.0



CH female elbow

Installment required measures

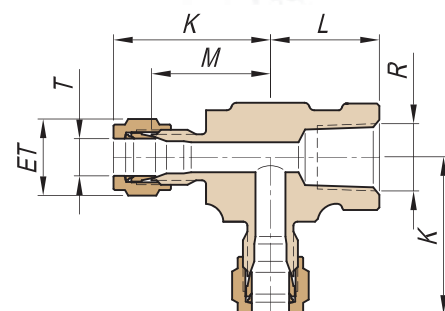
Model	T Tube OD	R NPT	MEASURES (MM)			
			ET	K	L	M
CH 1-1-	1/8	1/8	11.1	26.0	19.0	18.0
CH 1-2-	1/8	1/4	11.1	30.0	22.0	22.0
CH 1-4-	1/8	1/2	11.1	32.2	29.0	28.0
CH 2-1-	1/4	1/8	14.3	32.2	19.0	24.0
CH 2-2-	1/4	1/4	14.3	32.2	22.0	24.0
CH 2-3-	1/4	3/8	14.3	32.2	22.0	24.0
CH 2-4-	1/4	1/2	14.3	37.2	29.0	29.0
CH 3-2-	3/8	1/4	17.3	34.6	22.0	25.5
CH 3-3-	3/8	3/8	17.3	36.6	24.0	30.0
CH 3-4-	3/8	1/2	17.3	39.1	29.0	30.0
CH 4-2-	1/2	1/4	22.2	31.7	22.0	26.0
CH 4-3-	1/2	3/8	22.2	36.7	24.0	31.0
CH 4-4-	1/2	1/2	22.2	42.0	29.0	30.0
CH 5-4-	5/8	1/2	25.4	43.9	29.0	33.2
CH 6-4-	3/4	1/2	28.6	44.6	29.0	33.2



THT female run tee

Installment required measures

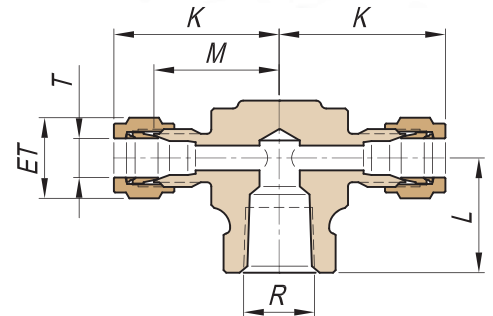
Model	T Tube OD	R NPT	MEASURES (MM)			
			ET	K	L	M
THT 1-1-	1/8	1/8	11.1	26.0	19.0	18.0
THT 2-1-	1/4	1/8	14.3	28.2	19.0	20.0
THT 2-2-	1/4	1/4	14.3	32.2	22.0	24.0
THT 3-2-	3/8	1/4	17.3	32.5	22.0	25.5
THT 3-3-	3/8	3/8	17.3	41.0	32.0	32.0
THT 4-2-	1/2	1/4	22.2	38.0	22.0	26.0
THT 4-4-	1/2	1/2	22.2	42.0	29.0	30.0
THT 5-4-	5/8	1/2	25.4	41.2	32.0	30.5
THT 6-4-	3/4	1/2	28.6	42.6	34.0	31.2



TTH female branch tee

Installment required measures

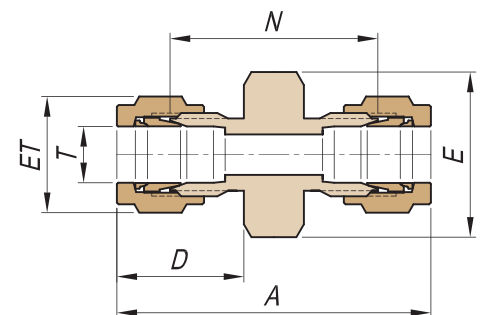
Model	T Tube OD	R NPT	MEASURES (MM)			
			ET	K	L	M
TTH 1-1-	1/8	1/8	11.1	26.0	19.0	18.0
TTH 2-1-	1/4	1/8	14.3	28.2	19.0	20.0
TTH 2-2-	1/4	1/4	14.3	32.2	22.0	24.0
TTH 3-2-	3/8	1/4	17.3	34.6	22.0	25.5
TTH 4-2-	1/2	1/4	22.2	38.0	22.0	26.0
TTH 4-4-	1/2	1/2	22.2	42.0	29.0	30.0
TTH 5-4-	5/8	1/2	25.4	41.2	32.0	30.5
TTH 6-4-	3/4	1/2	28.6	42.6	34.0	31.2



UT union

Installment required measures

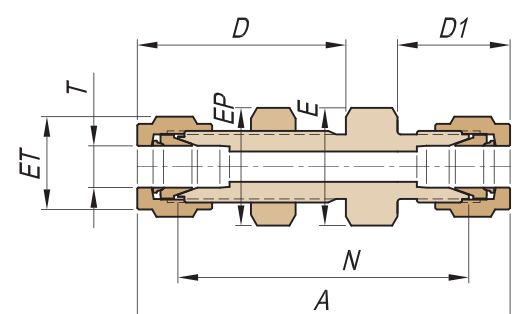
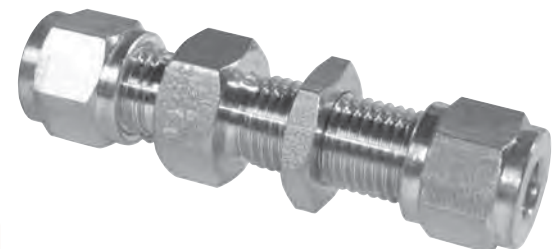
Model	T Tube OD	MEASURES (MM)				
		A	D	E	ET	N
UT 1-0-	1/8	42.0	17.0	11.1	11.1	26.0
UT 2-0-	1/4	46.4	19.2	14.3	14.3	30.0
UT 3-0-	3/8	50.2	21.1	15.8	17.3	32.0
UT 4-0-	1/2	57.0	24.0	22.2	22.2	33.0
UT 5-0-	5/8	55.4	23.7	23.8	25.4	34.0
UT 6-0-	3/4	59.2	24.6	27.0	28.6	36.4
UT 8-0-	1	70.2	28.1	34.9	38.1	43.0



UTP bulkhead union

Installment required measures

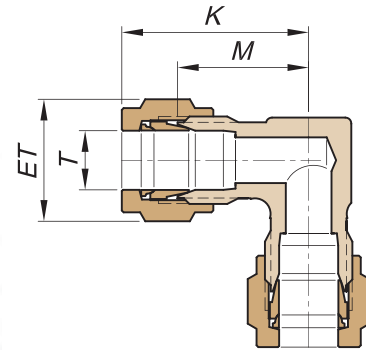
Model	T Tube OD	MEASURES (MM)						
		A	D	D1	E	EP	ET	N
UTP 1-0-	1/8	55.0	31.0	17.0	11.1	12.7	11.1	38.1
UTP 2-0-	1/4	61.4	34.2	19.2	15.8	15.8	14.3	45
UTP 3-0-	3/8	67.2	38.1	21.1	19.1	19.1	17.3	49
UTP 4-0-	1/2	76.0	44.0	24.0	25.4	25.4	22.2	52
UTP 5-0-	5/8	75.7	44.0	23.7	27.0	28.6	27.0	54.3
UTP 6-0-	3/4	81.0	48.4	24.6	34.9	31.8	28.6	58.2



CU union elbow

Installment required measures

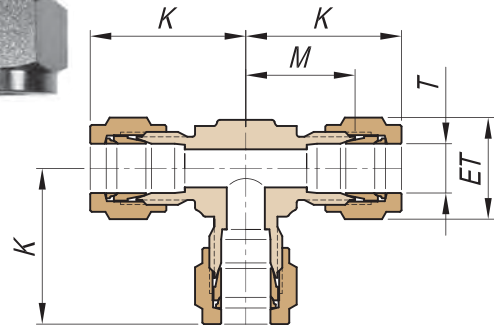
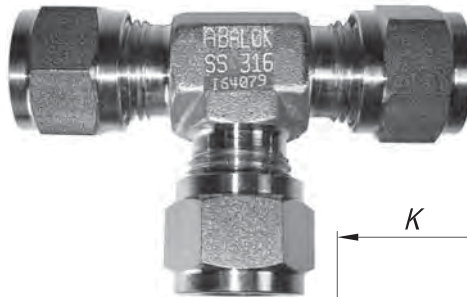
Model	T Tube OD	MEASURES (MM)		
		ET	K	M
CU 1-0-	1/8	11.1	26.0	18.0
CU 2-0-	1/4	14.3	28.2	20.0
CU 3-0-	3/8	17.3	30.6	21.5
CU 4-0-	1/2	22.2	38.0	26.0
CU 5-0-	5/8	25.4	42.7	32.0
CU 6-0-	3/4	28.6	43.4	32.0
CU 8-0-	1	38.1	47.6	34.0



TU union tee

Installment required measures

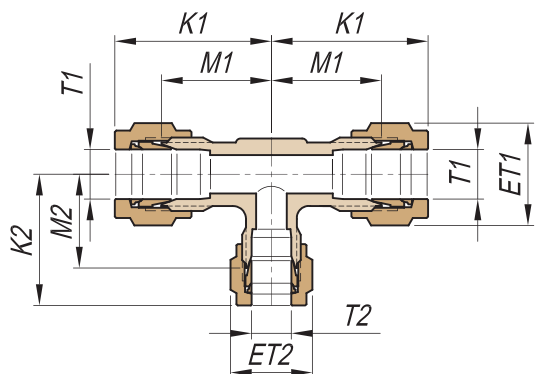
Model	T Tube OD	MEASURES (MM)		
		ET	K	M
TU 1-0-	1/8	11.1	26.0	18.0
TU 2-0-	1/4	14.3	28.2	20.0
TU 3-0-	3/8	17.3	30.6	21.5
TU 4-0-	1/2	22.2	38.0	26.0
TU 5-0-	5/8	25.4	38.2	27.5
TU 6-0-	3/4	28.6	43.4	32.0
TU 8-0-	1	38.1	47.6	34.0



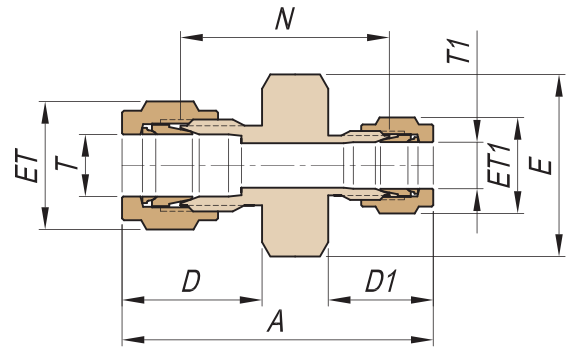
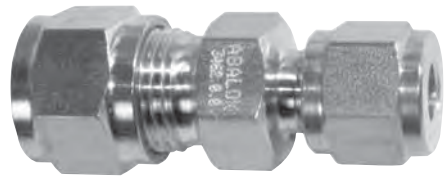
TUR reducing tee union

Installment required measures

Model	T1 Tube OD	T2 Tube OD	MEASURES (MM)					
			ET1	ET2	K1	K2	M1	M2
TUR 2-1-	1/4	1/8	14.3	11.1	28.2	26.0	20.0	18.0
TUR 3-2-	3/8	1/4	17.3	14.3	30.6	28.2	21.5	20.0
TUR 4-2-	1/2	1/4	22.2	14.3	38.0	28.2	26.0	20.0
TUR 4-3-	1/2	3/8	22.2	17.3	38.0	30.6	26.0	21.5
TUR 5-3-	5/8	3/8	25.4	17.3	41.2	38.0	30.2	29.0
TUR 5-4-	5/8	1/2	25.4	22.2	38.2	38.0	27.5	26.0
TUR 6-3-	3/4	3/8	28.6	17.3	43.4	30.6	32.0	21.5
TUR 6-4-	3/4	1/2	28.6	22.2	44.1	40.4	30.2	29.0
TUR 8-3-	1	3/8	38.1	17.3	47.6	30.6	34.0	21.5
TUR 8-4-	1	1/2	38.1	22.2	47.6	38.0	34.0	26.0
TUR 8-6-	1	3/4	38.1	28.6	49.6	48.6	36.0	34.7



UR reducing union



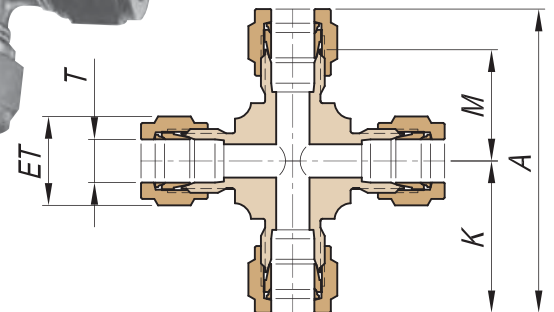
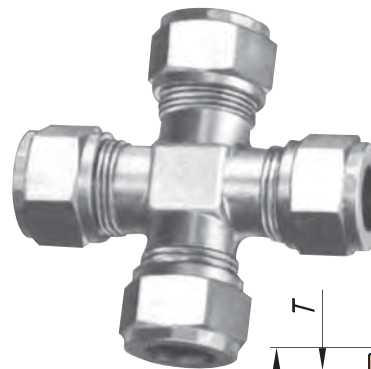
Installment required measures

Model	T Tube OD	T1 Tube OD	MEASURES (MM)						
			A	D	D1	E	ET	ET1	N
UR 2-1-	1/4	1/8	44.2	19.2	17.0	14.3	14.3	11.1	28.0
UR 3-1-	3/8	1/8	46.1	21.1	17.0	15.8	17.3	11.1	29.0
UR 3-2-	3/8	1/4	48.3	21.1	19.2	15.8	17.3	14.3	31.0
UR 4-1-	1/2	1/8	50.0	24.0	17.0	22.2	22.2	11.1	30.0
UR 4-2-	1/2	1/4	52.2	24.0	19.2	22.2	22.2	14.3	32.0
UR 4-3-	1/2	3/8	54.1	24.0	21.1	22.2	22.2	17.3	33.0
UR 5-4-	5/8	1/2	55.7	23.7	24.0	23.8	25.4	22.2	33.0
UR 6-2-	3/4	1/4	53.8	24.6	19.2	27.0	28.6	14.3	34.2
UR 6-3-	3/4	3/8	55.7	24.6	21.1	27.0	28.6	17.3	35.2
UR 6-4-	3/4	1/2	58.6	24.6	24.0	27.0	28.6	22.2	35.2
UR 8-6-	1	3/4	66.7	28.1	24.6	34.9	38.1	28.6	41.7

XC union cross

Installment required measures

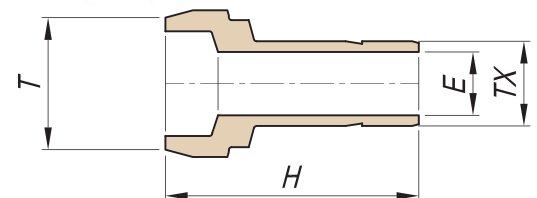
Model	T Tube OD	MEASURES (MM)			
		A	ET	K	M
XC 2-0-	1/4	54.4	14.3	27.2	19.0
XC 3-0-	3/8	61.0	17.3	30.5	21.4
XC 4-0-	1/2	73.2	22.2	36.6	24.6
XC 6-0-	3/4	81.6	28.6	40.8	29.4



TM Port connector

Installment required measures

Model	T Tube OD	Tx Tube OD	MEASURES (MM)	
			H	E
TM 2-2-	1/4	1/4	25	4.5
TM 3-3-	3/8	3/8	26	7
TM 4-4-	1/2	1/2	37	9.5
TM 6-4-	3/4	1/2	38	9.5
TM 6-6-	3/4	3/4	39	15.2

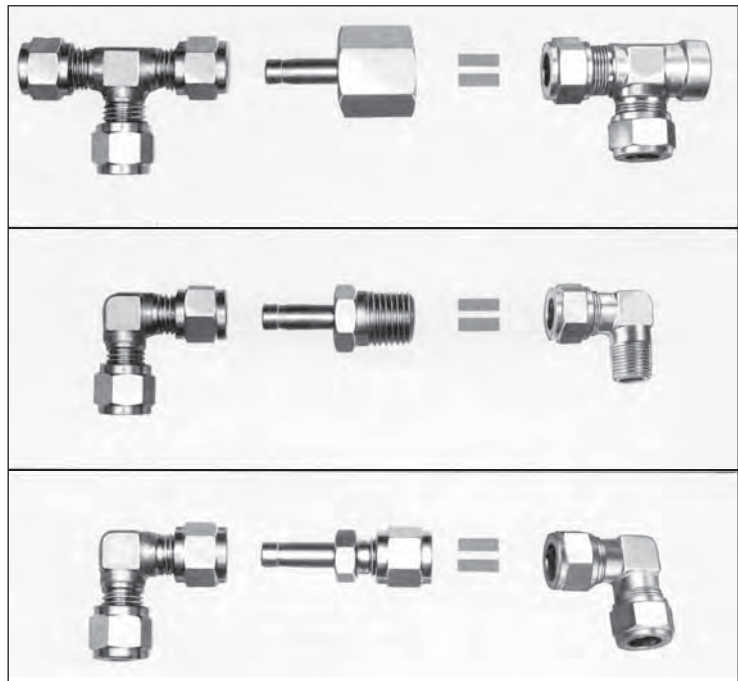


Other combinations available

Adapters and Reducers

Using the ABALOK® adapters with the elbows and tees you can obtain the following benefits:

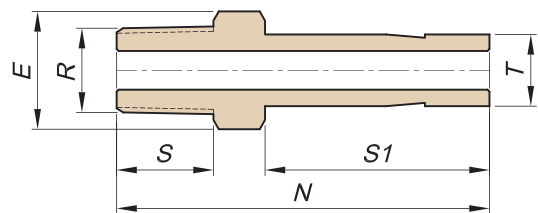
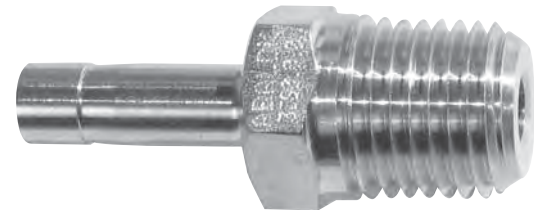
- It solves the difficult alignment problems during the installment of elbows and tees. When the threads are strongly tightened, an angle connector usually remains disaligned with the tube.
- It eliminates the need of having stock of special elbows and tees, reducing the quantity of items stored. Only having some tee & elbow unions and combining them in a proper way with the adapters any configuration can be obtained.



AM male adapter

Installment required measures

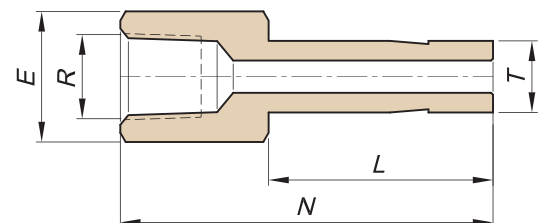
Model	T Tube OD	R NPT	MEASURES (MM)			
			E	N	S	S1
AM 2-1-	1/4	1/8	11.1	35.0	10.0	18.5
AM 2-2-	1/4	1/4	14.3	40.0	15.0	18.5
AM 2-4-	1/4	1/2	22.2	44.0	18.0	18.5
AM 3-2-	3/8	1/4	14.3	43.0	15.0	21.0
AM 3-3-	3/8	3/8	17.5	43.0	15.0	21.0
AM 3-4-	3/8	1/2	22.2	46.0	18.0	21.0
AM 4-4-	1/2	1/2	22.2	52.0	18.0	26.0
AM 5-4-	5/8	1/2	22.2	54.0	18.0	27.5
AM 6-6-	3/4	3/4	28.6	58.0	20.0	28.0
AM 8-6-	1	3/4	28.6	63.0	20.0	33.0
AM 8-8-	1	1	34.9	68.0	25.0	33.0



AH female adapter

Installment required measures

Model	T Tube OD	R NPT	MEASURES (MM)		
			E	L	N
AH 2-1-	1/4	1/8	14.3	17.5	31.0
AH 2-2-	1/4	1/4	19.1	17.5	36.0
AH 2-3-	1/4	3/8	22.2	17.5	38.0
AH 3-2-	3/8	1/4	19.1	20.0	38.0
AH 3-3-	3/8	3/8	22.2	20.0	39.0
AH 3-4-	3/8	1/2	27.0	20.0	44.0
AH 4-4-	1/2	1/2	27.0	25.0	49.0
AH 5-4-	5/8	1/2	27.0	27.5	51.0
AH 6-6-	3/4	3/4	31.8	28.5	54.0

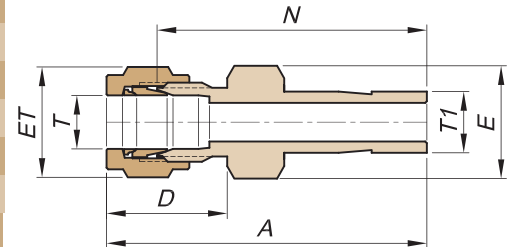


AR reducer

Installment required measures

Model	T Tube OD	T1 Tube OD	MEASURES (MM)				
			A	D	E	ET	N
AR 1-2-	1/8	1/4	39.0	17.0	11.1	11.1	31.0
AR 1-4-	1/8	1/2	47.0	17.0	14.3	11.1	39.0
AR 2-3-	1/4	3/8	44.2	19.2	12.7	14.3	36.0
AR 2-4-	1/4	1/2	49.7	19.2	14.3	14.3	41.5
AR 3-4-	3/8	1/2	51.6	21.1	15.9	17.3	42.5
AR 3-6-	3/8	3/4	56.6	21.1	20.6	17.3	47.5
AR 4-5-	1/2	5/8	58.0	24.0	20.6	22.2	46.0
AR 4-6-	1/2	3/4	59.5	24.0	20.6	22.2	47.5
AR 6-4-	3/4	1/2	59.4	24.6	27.0	28.6	48.0

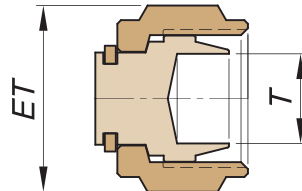
*Ask for other dimensions



PO plug

Installment required measures

Model	T Tube OD	ET (MM)
PO 1-0-	1/8	11.1
PO 2-0-	1/4	14.3
PO 3-0-	3/8	17.3
PO 4-0-	1/2	22.2
PO 5-0-	5/8	25.4
PO 6-0-	3/4	28.6
PO 8-0-	1	38.1

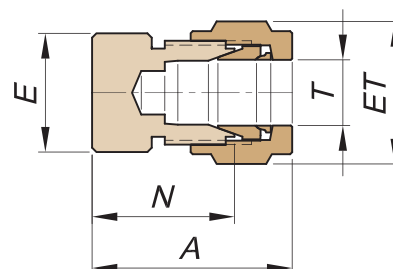
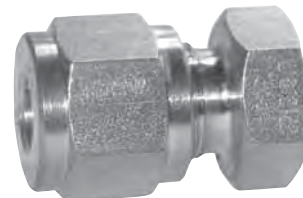


Note: It is not necessary an adjustment of 1 1/4 turn. Only adjust the plug 1/4 turn form the hand tight.

PA cap

Installment required measures

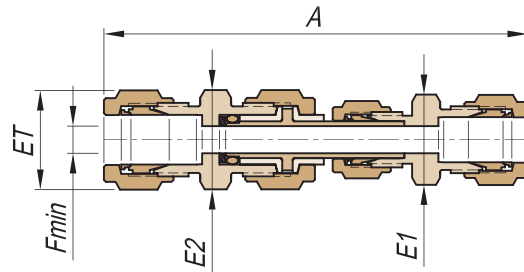
Model	T Tube OD	MEASURES (MM)			
		A	E	ET	N
PA 1-0-	1/8	23.0	11.1	11.1	15.0
PA 2-0-	1/4	25.2	14.3	14.3	17.0
PA 3-0-	3/8	29.1	17.3	17.3	20.0
PA 4-0-	1/2	32.0	22.2	22.2	20.0
PA 5-0-	5/8	33.7	25.4	25.4	23.0
PA 6-0-	3/4	34.9	28.6	28.6	23.5
PA 8-0-	1	44.6	38.1	38.1	31.0



RMD/UTD dielectric fitting

Dielectric fittings isolate monitoring instruments from the effects of electrical current. The fittings interrupt cathodic current flow while permitting full fluid flow. Its thermoplastic insulation provides an excellent electrical and chemical resistance.

It is available in straight male or union versions, Ø 1/4", 3/8" y 1/2".



Caution: The insulating connection must not be broken or used as a disconnection point. Any wrenching must be done in accordance with the installation instructions.

Installment required measures

Model	T Tube OD	R NPT	MEASURES (MM)				
			A	E1	E2	ET	F min.
UTD 2-0-	1/4	-	101.5	15.8	22.2	14.3	4.75
UTD 3-0-	3/8	-	105.5	15.8	22.2	17.3	7.0
UTD 4-0-	1/2	-	111.0	22.2	22.2	22.2	7.0
RMD 2-2-	1/4	1/4	97.5	15.8	22.2	14.3	7.0
RMD 3-3-	3/8	3/8	99.5	17.4	22.2	17.3	7.0
RMD 4-4-	1/2	1/2	105.0	22.2	22.2	22.2	7.0

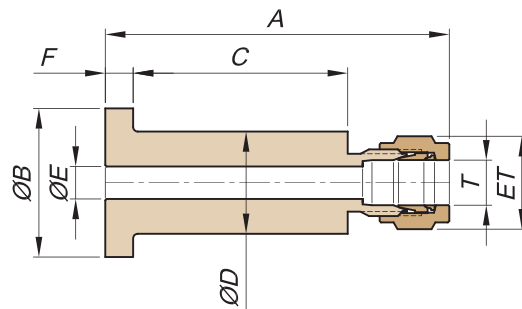
Materials:

Body: AISI 316 stainless steel
 Insulators: PEEK or similar
 Seals: Fluorocarbon / PTFE

Technical data:

Electrical resistance of insulators:
 4x10⁹ ohm @ 1000 V, 70°F
 Maximum pressure rating:
 5000 psi @ 70°F
 Temperature rating: -30 to 400 °F

ALJ lapped flange connector



Installment required measures

Model	T Tube OD	Flange	MEASURES (MM)							FINISH SMOOTH-FINISH
			A	B	C	D	E	ET	F	
ALJ 3-4-	3/8	1/2"	79.1	34.9	53.0	21.3	7.5	17.3	5.0	x
ALJ 3-6-	3/8	3/4"	79.1	42.9	53.0	26.9	7.5	17.3	5.0	x
ALJ 4-4-	1/2	1/2"	82.0	34.9	53.0	21.3	10.5	22.2	5.0	x
ALJ 4-6-	1/2	3/4"	82.0	42.9	53.0	26.9	10.5	22.2	5.0	x

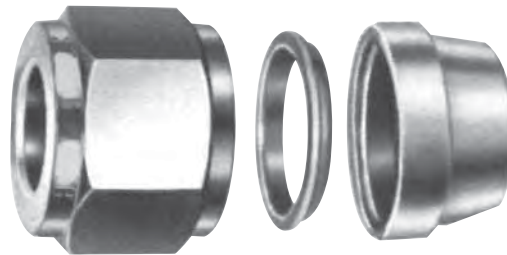
KV ferrule set

Model	T Tube OD
KV1-0-	1/8
KV2-0-	1/4
KV3-0-	3/8
KV4-0-	1/2
KV5-0-	5/8
KV6-0-	3/4
KV8-0-	1



KT nut and ferrule set

Model	T Tube OD
KT1-0-	1/8
KT2-0-	1/4
KT3-0-	3/8
KT4-0-	1/2
KT5-0-	5/8
KT6-0-	3/4
KT8-0-	1



The nut and ferrule set ABALOK® allow the fitting re use, replacing the components damage or deformed.

They are provided mounted over a plastic mandrel, for an easy use.

HPE pre-setting tool

Installment required measures

Model	T Tube OD	MEASURES (MM)	
		Lenght	across flats
HPE 1	1/8	49.2	17.5
HPE 2	1/4	49.2	17.5
HPE 3	3/8	50.0	17.5
HPE 4	1/2	50.8	22.2
HPE 5	5/8	57.1	25.4
HPE 6	3/4	63.5	28.6
HPE 8	1	63.5	38.1



Threads of pre-setting tools should be lubricated the very first time and relubricated every tenth time thereafter

Other configurations and measurements

In addition of the products detailed here, we can offer variants like other measurements, millimetric versions, configurations according with special customer request, etc. Contact our Sales Department.